

Portfolio Requirements

What's a Portfolio?

- Your portfolio is a collection of your work that shows us your design ideas and fashion-focused creative skills.
- Your portfolio should include the 4 components explained on this reference sheet.

Note: Portfolios are only required for high school admission.



1

Redesign a Shirt

What's a Redesign?

When you take an existing shirt and change its purpose or the way it is used in your new design.

For example, take a shirt and change it to a bag, a dress, pants, or another wearable garment. **Be creative!**

Redesign Requirements

Follow these steps while creating your redesigned shirt:

Step 1. In your sketchbook, add a picture of the original shirt that you are redesigning **before** creating your new design.

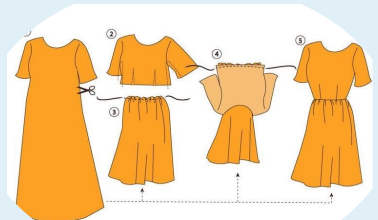
Step 2. Document steps you make to redesign the shirt in your **sketchbook**:

- **Draw sketches** of possible design options
- **Write notes and label designs** tracking all changes made along the way
- **Take a picture** of the *final* reconstructed design.

Step 3. Write an artist's statement about your interest in fashion and how your redesigned garment relates to your style.

Your statement should also include:

- Why you chose this shirt to redesign
- How you changed the original shirt design to its new style and purpose



Step 4. Bring your final redesigned garment for review.

2

Sketchbook

What's a Sketchbook?

A book to capture your design process, fashion-related ideas, and art-making skills.

It should show us how you are practicing and improving your work.

Tips for Your Sketchbook

1. Include a variety of content, such as:

- Fashion sketching, ideas and note taking
- Drawings of clothing styles including textures, patterns and colors
- Show inspiration used for designing garment ideas
- Material exploration and experimentation (use of a variety of media)
- Your personal style and fashion interests
- Collected inspirations (magazine clippings and any fashionable item or material that inspires you)
- Observational drawings

2. Your sketchbook should be mostly filled. Try to work in it daily.

3. If you have multiple sketchbooks, bring them all.

4. Leave your "mistakes" in your sketchbook. They are part of your process and show us your growth. Never tear out pages of your sketchbook.

3 & 4

Works of Choice

What's a Work of Choice?

Clothing, illustration, or media that helps us get to know you as an individual, and shows us your vision as a fashion designer.

This is an opportunity to show us your best!

Tips for Selecting Your Best Works of Choice

1. Bring as much work as you'd like, but you must bring at least 2 Works of Choice.
2. This work should NOT be inside of your sketchbook.
3. Ideas may include but are not limited to:
 - Clothing created by you
 - Fashion Sketches and Illustrations
 - Drawings
 - Jewelry
 - Mood Boards (Fashion-Inspired)
 - Painting on Garments
 - Photography
 - Other Media of Choice
 - Digital works*

**Feel free to bring digital works on a phone, tablet, laptop, or flashdrive!*

Other Information Related to Portfolio Reviews

Portfolio Review Day-

**Friday,
March 1, 2024**
(Asynchronous Learning Day)

During portfolio review day, prospective students will...

- show their prepared portfolio for review
- complete a design challenge
- meet some faculty and staff

Design Challenge

On portfolio review day, you will participate in a fashion design challenge.

You will be given a prompt in which you need to respond.

Materials needed for the challenge will be provided.

Work completed during the fashion design challenge will be kept by BDS and will not be returned to you.

Need Support? Attend a Workshop at Open House!

Design teachers are available to provide portfolio development support to prospective students during the following open house/workshop dates:

- **Wednesday, Jan. 10, 2024**
 - Workshop 4:30-5:30 p.m.
 - Open House 5:30-6:30 p.m.
- **Wednesday, Feb. 21, 2024**
 - Workshop 4:30-5:30 p.m.
 - Open House 5:30-6:30 p.m.

Portfolio Related Questions?

Email apply@baltimoredesignschool.org.